

SCOTT COUNTY, KENTUCKY

PDR Program



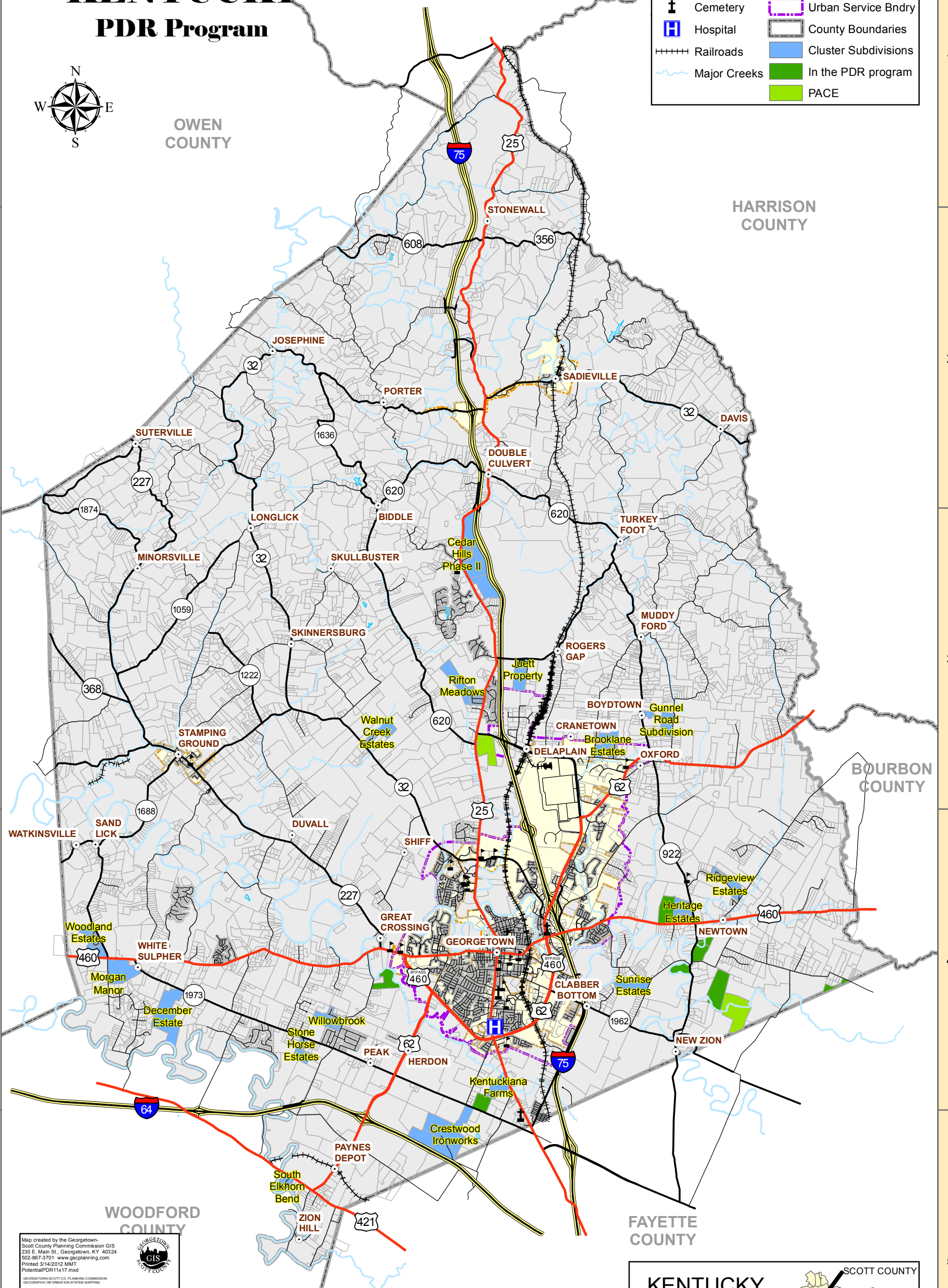
GRANT COUNTY

OWEN COUNTY

HARRISON COUNTY

Legend

- Towns
- Schools
- Cemetery
- Hospital
- Railroads
- Major Creeks
- Major Lakes
- City Limits
- Urban Service Bndry
- County Boundaries
- Cluster Subdivisions
- In the PDR program
- PACE



Map created by the Georgetown-Scott County Planning Commission GIS
 230 E. Main St., Georgetown, KY 40324
 502-867-3701 | www.gisplanning.com
 Printed 3/14/2012 MMT
 PotentialPDR11x17.mxd

GEORGETOWN-SCOTT COUNTY
 GIS

GEORGETOWN-SCOTT COUNTY PLANNING COMMISSION
 GEOGRAPHIC INFORMATION SYSTEM MAPPING
 COPYRIGHT, LIMITATION OF LIABILITY AND ACCURACY STATEMENT
 The following statement is applicable to all map products produced by the Georgetown-Scott County Planning Commission Geographic Information System (GIS/PCRS). All rights reserved.
 No part of this map may be reproduced or transmitted in any form or by any means, electronic or mechanical, including photocopying and recording, or by any information storage or retrieval system, without an express permission in writing by GIS/PCRS.
 LIMITATION OF LIABILITY: GIS/PCRS has no indication or reason to believe that there are any inaccuracies or omissions of information contained in this work and makes NO REPRESENTATIONS OF ANY KIND, INCLUDING, BUT NOT LIMITED TO, THE WARRANTIES OF MERCHANTABILITY, FITNESS FOR A PARTICULAR USE, NOW OR IN THE FUTURE, OR ANY OTHER WARRANTIES TO BE IMPLIED, WITH RESPECT TO THE INFORMATION OR DATA FURNISHED HEREIN. INFORMATION SUPPLIED BY GIS/PCRS SHALL BE CONSIDERED GENERAL INFORMATION AND SHALL, IN NO MANNER, BE USED IN LIEU OF ACTUAL ENGINEERING OR SURVEY DATA, OR APPLICABLE REGULATIONS AND REQUIREMENTS. APPLICANT FURTHER WARRANTS THAT THE INFORMATION FURNISHED SHALL BE USED EXCLUSIVELY FOR THE PURPOSE FOR WHICH IT WAS CREATED.

GIS/PCRS aerial photography and digital mapping prepared by Photo Science, Inc., Lexington, KY. Date of photography: March 25, 1998 in accordance with the National Map Accuracy Standards. Selected areas updated November 25, 2003 by Photo Science, Inc., Lexington, KY. Data for the fully automatic vectorization used for vector compilation work. Horizontal Datum is based on the Kentucky State Plane Coordinate System North Zone, North American Datum 1983 (NAD83) in US feet and tied to the Kentucky Mean Sea Level. Vertical Datum is based on the 1988 adjustment of the National Geodetic Vertical Datum of 1985.

Scott County Kentucky Property Valuation

Tim Jenkins, Property Valuation Administrator
 101 East Main Street | Suite 206 Scott County Courthouse | Georgetown, KY 40324
 Ph: (502) 862-7883 | Fax: (502) 893-7899 | Hours: Mon-Fri: 8:30-4:30 P.M. 9:30-6:00
 Email: ScottPVA@scottky.gov

