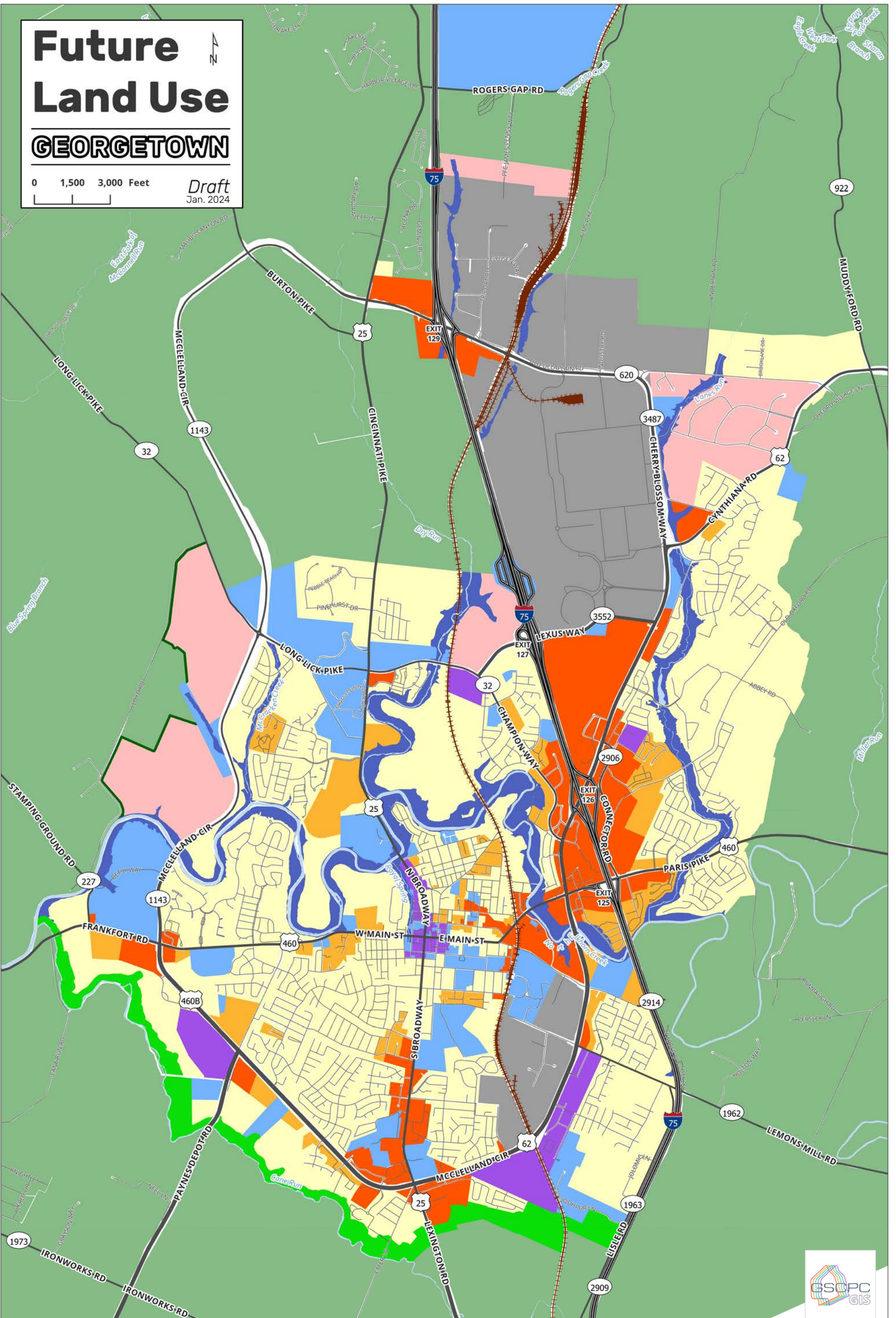


Future Land Use

GEORGETOWN

0 1,500 3,000 Feet

Draft
Jan. 2024



- | | | | |
|---|--|---|--|
|  Agriculture |  Creek Corridor |  Mixed Use |  Low Density Residential |
|  Greenbelt |  Commercial |  Quasi-Public |  Medium Density Residential |
|  Landscape Buffer |  Commerce/BIT |  Industrial | |