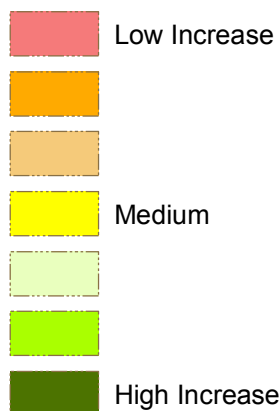


U.S. Census Tracts

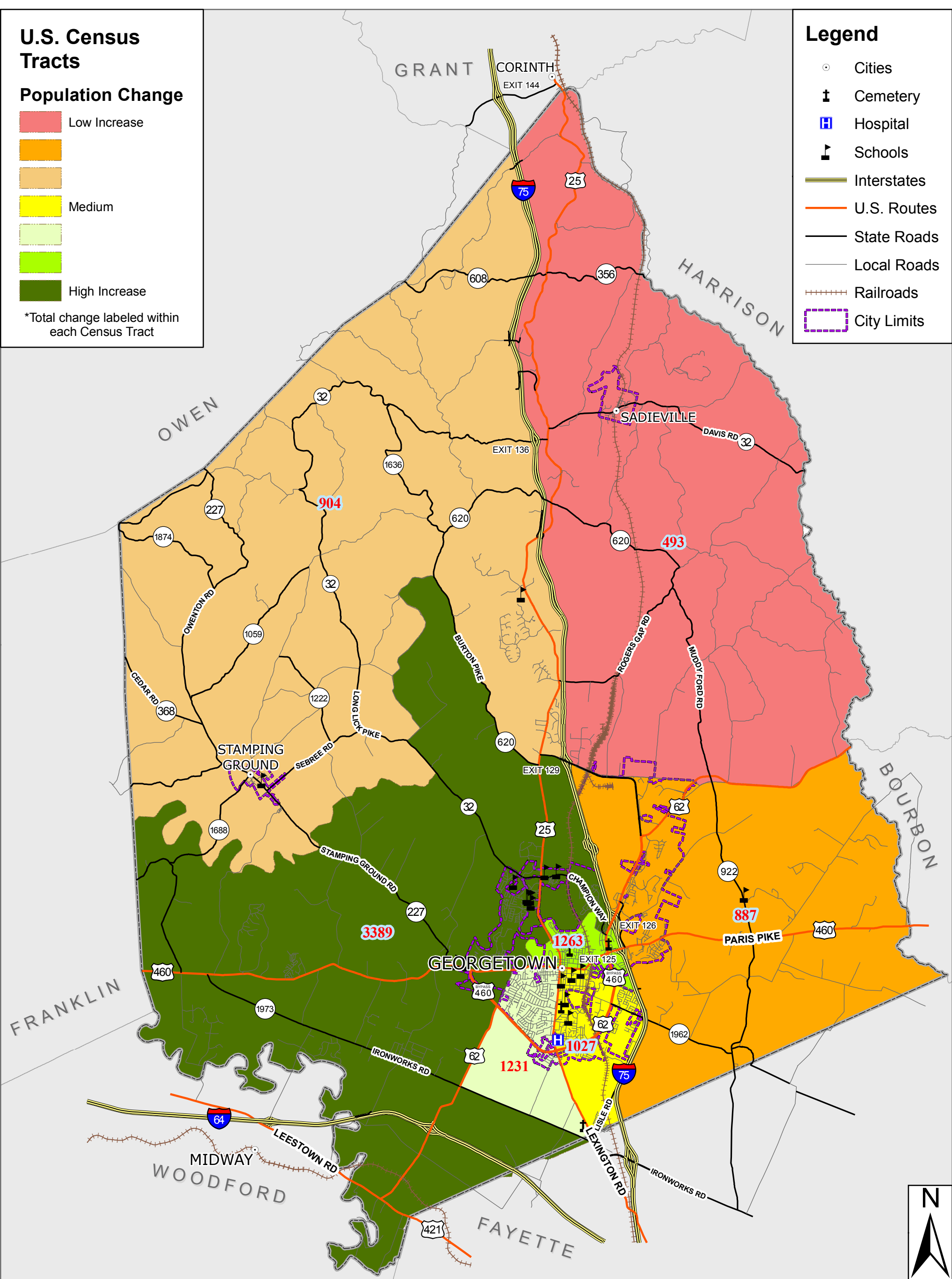
Population Change



*Total change labeled within each Census Tract

Legend

- Cities
- Cemetery
- Hospital
- Schools
- Interstates
- U.S. Routes
- State Roads
- Local Roads
- Railroads
- City Limits



MAP 13

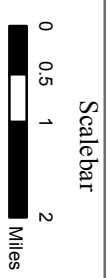
POPULATION CHANGE 1990-2000



2006 Comprehensive Plan Update
 Scott County, Kentucky

Map Information

Georgetown City Limits = 10,471 acres
 Urban Service Boundary = 14,774 acres
 Difference = 4,303 acres
 Data source : GSCPC/US, Census Bureau
 Printed 3/27/2007
 Population:CensusTract1X17.MXD



Georgetown-Scott County Planning Commission GIS Office
 230 East Main Street,
 Georgetown, KY 40324
 8:30-4:30 M-F
 Phone: 502-867-3701
 Fax: 502-867-3725
 www.gscplanning.com



GIS Disclaimer

GEORGETOWN, SCOTT COUNTY PLANNING COMMISSION
 GEORGETOWN, SCOTT COUNTY, KY 40324
 This document is a GIS-based map product. It is not a legal document. It is intended for informational purposes only. The information contained herein is derived from various sources, including aerial photography, ground surveys, and other public records. The information is provided as is, without warranty. The user assumes all liability for any errors or omissions. The information is not to be used for any purpose other than that for which it was created.

Parcels from the Scott County Property Valuation Assessment

Office in the Scott County Courthouse,
 Parcels are Not Survey Grade, for Reference Purposes Only, & Subject to Change at Any Time.*



Scott County Kentucky Property Valuation
 Tim Perkins, Property Valuation Administrator
 100 East Main Street, Suite 205 Scott County Courthouse, Georgetown, KY 40324
 Phone: 502-867-3701
 Fax: 502-867-3725
 www.scottcountygov.com