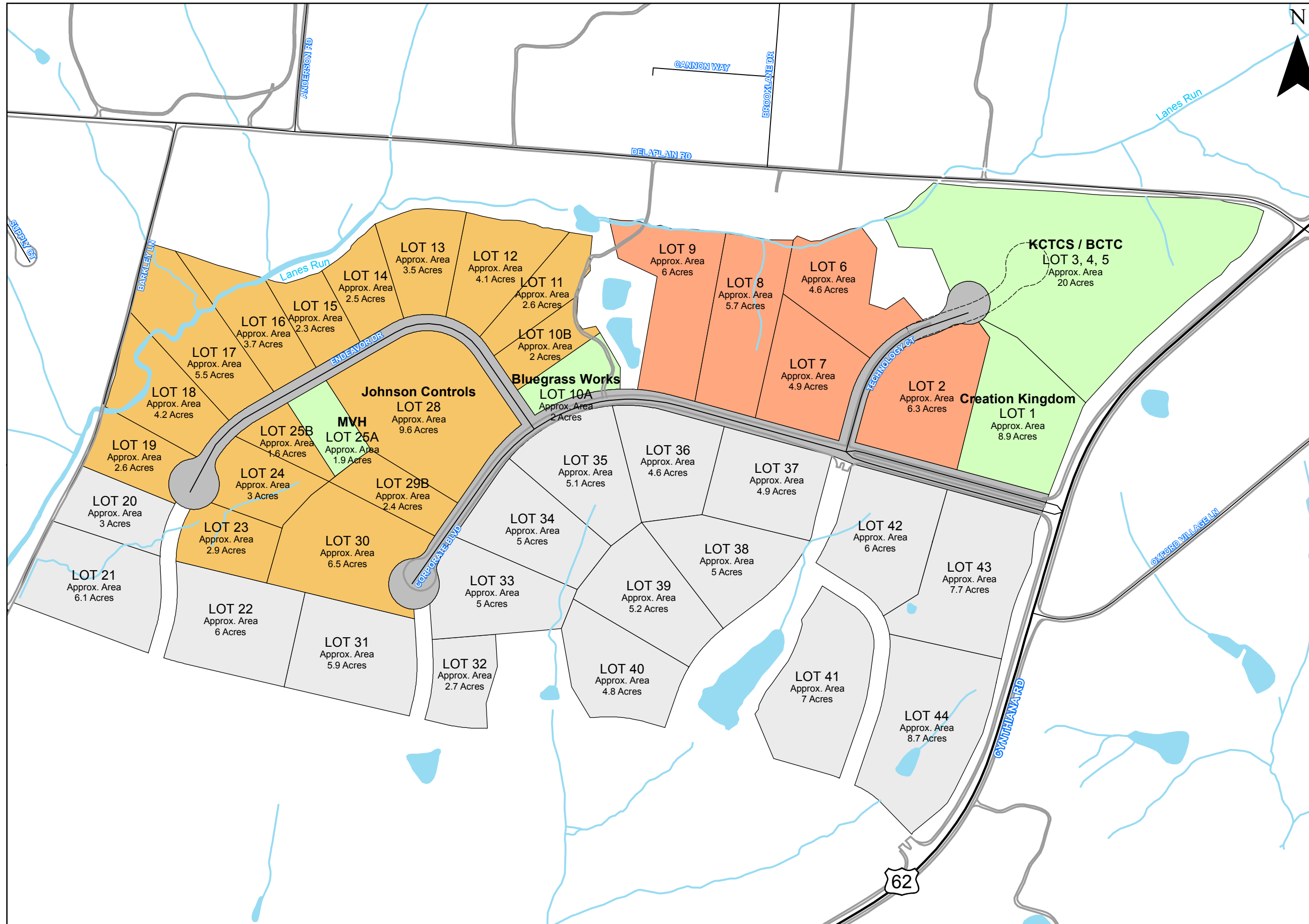


Lanes Run Business Park



Legend

Cul-de-sac Edit, 3-2007

- Preliminary Amendment

BP Parcels

- For Sale BP-1
- For Sale I-1E
- Not Developed
- Sold
- Pending
- Business Park Roads

Source: Parcel boundaries obtained from Quest Engineers.

For more information please contact Jack Conner at the Chamber of Commerce at 502-863-5424.

Bluegrass Advanced Manufacturing Center Siteplan from Ekhoﬀ, Ochenkoski & Polk Architects

Cul-de-sac edit made by GIS & does not represent work done by an engineering firm



Map by the Georgetown-Scott County Planning Commission GIS
230 E. Main St.
Georgetown, KY 40324
502-867-3701 Fx 502-867-3725
www.gsclanning.com
LanesRun_CorporateBlvd.mxd
Printed 10/10/2011

GEORGETOWN-SCOTT CO. PLANNING COMMISSION
GEOGRAPHIC INFORMATION SYSTEM MAPPING

COPYRIGHT, LIMITATION OF LIABILITY AND ACCURACY STATEMENT
The following statement is applicable to all maps products produced by the Georgetown-Scott County Planning Commission Geographic Information System (GIS/PCGIS). All rights reserved. No part of this map may be reproduced or transmitted in any form or by any means, electronic or mechanical, including photocopying and recording, or by any information storage or retrieval system, except as expressly permitted in writing by GIS/PCGIS.

LIMITATION OF LIABILITY: GIS/PCGIS has no indication or reason to believe that there are any inaccuracies or omissions of information incorporated in this work and makes NO REPRESENTATIONS OF ANY KIND, INCLUDING, BUT NOT LIMITED TO, THE WARRANTIES OF MERCHANTABILITY OR FITNESS FOR PARTICULAR USE. NOW ARE ANY SUCH WARRANTIES TO BE IMPLIED WITH RESPECT TO THE INFORMATION OR DATA FURNISHED HEREIN. INFORMATION SUPPLIED BY GIS/PCGIS SHALL BE CONSIDERED GENERAL INFORMATION AND SHALL IN NO MANNER BE USED IN LIEU OF ACTUAL ENGINEERING OR SURVEY DATA, OR APPLICABLE REGULATORY REQUIREMENTS. APPLICANT FURTHER WARRANTS THAT THE INFORMATION PURCHASED SHALL BE USED EXCLUSIVELY FOR THE PURPOSE FOR WHICH IT WAS CREATED.

GIS/PCGIS aerial photography and digital mapping prepared by Photo Science, Inc., Lexington, KY. Date of photography: March 22, 1998 in accordance with the National Map Accuracy Standards. Selected areas updated November 20, 2003 by Photo Science, Inc., Lexington, KY. Only first-order fully analytical stereoplotting used for stereo compilation work. Horizontal Datum is based on the Kentucky State Plane Coordinate System North Zone, North American Datum 1983 (NAD83) in US feet and tied to the Kentucky HARN Network. Vertical Datum is based on the 1985 adjustment of the National Geodetic Vertical Datum of 1929.

* Mapping available in digital or hard copy format in accordance with the adopted fee schedule and standards set out in the Records Request Form.