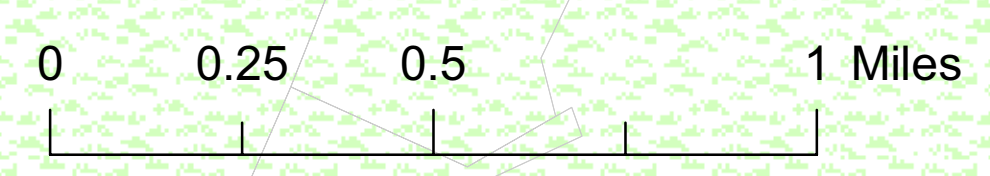
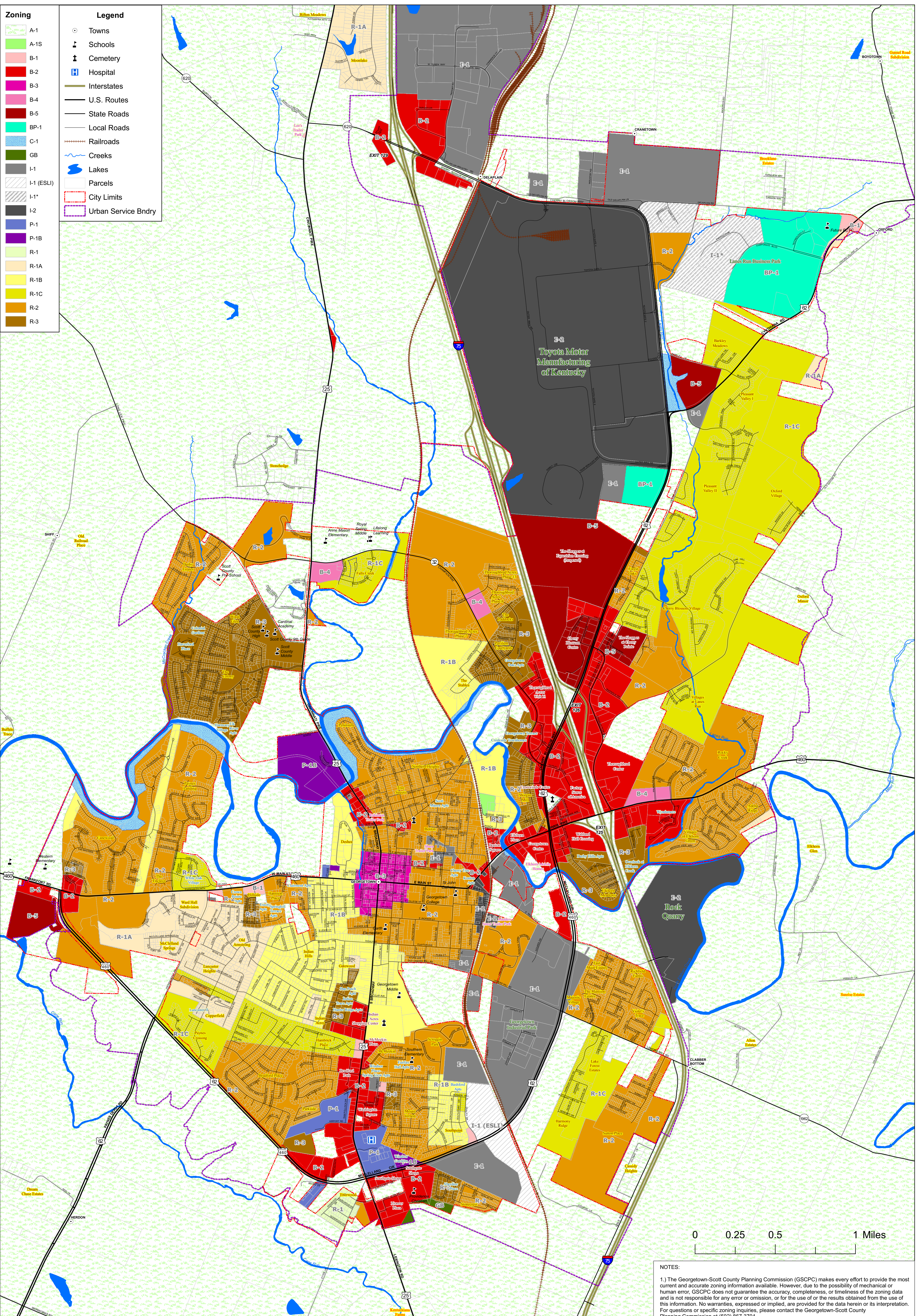


Zoning		Legend	
	A-1		Towns
	A-1S		Schools
	B-1		Cemetery
	B-2		Hospital
	B-3		Interstates
	B-4		U.S. Routes
	B-5		State Roads
	BP-1		Local Roads
	C-1		Railroads
	GB		Creeks
	I-1		Lakes
	I-1 (ESLI)		Parcels
	I-1*		City Limits
	I-2		Urban Service Bndry
	P-1		
	P-1B		
	R-1		
	R-1A		
	R-1B		
	R-1C		
	R-2		
	R-3		



NOTES:
 1.) The Georgetown-Scott County Planning Commission (GSCPC) makes every effort to provide the most current and accurate zoning information available. However, due to the possibility of mechanical or human error, GSCPC does not guarantee the accuracy, completeness, or timeliness of the zoning data and is not responsible for any error or omission, or for the use of or the results obtained from the use of this information. No warranties, expressed or implied, are provided for the data herein or its interpretation. For questions or specific zoning inquiries, please contact the Georgetown-Scott County Planning Commission at (502) 867-3701.



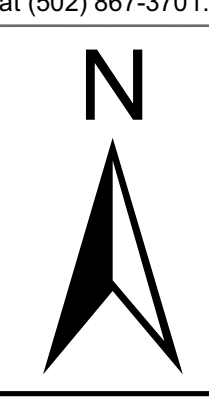
Scott County Kentucky Property Valuation
 Tim Jenkins, Property Valuation Administrator
 212 West Main Street, Room 205, Scott County Courthouse, Georgetown, KY 40324
 P: (502) 867-3881 Fax: (502) 867-3899 TDD: (502) 867-3881
 www.scottpva.com

Map created by the Georgetown-Scott County Planning Commission GIS
 230 E Main St, Georgetown, KY 40324
 502-867-3701 www.gscplanning.com
 GeorgetownZoning24x36.mxd
 Printed 12/2/2009 TAR

Incorporated



1880



GEORGETOWN-SCOTT COUNTY PLANNING COMMISSION
 COPYRIGHT NOTICE OF LIABILITY AND ACCURACY STATEMENT
 The Planning Commission of Georgetown-Scott County, Kentucky (GSCPC) is a public body created by the Kentucky State Constitution and the Kentucky Revised Statutes. The Commission is responsible for the development and implementation of the Comprehensive Zoning Ordinance for the City of Georgetown, Kentucky. The Commission's actions are subject to the approval of the Board of Commissioners of Scott County, Kentucky. The Commission does not warrant the accuracy, completeness, or timeliness of the zoning data provided on this map. The Commission is not responsible for any errors or omissions, or for the use of or the results obtained from the use of this information. No warranties, expressed or implied, are provided for the data herein or its interpretation. For questions or specific zoning inquiries, please contact the Georgetown-Scott County Planning Commission at (502) 867-3701.