

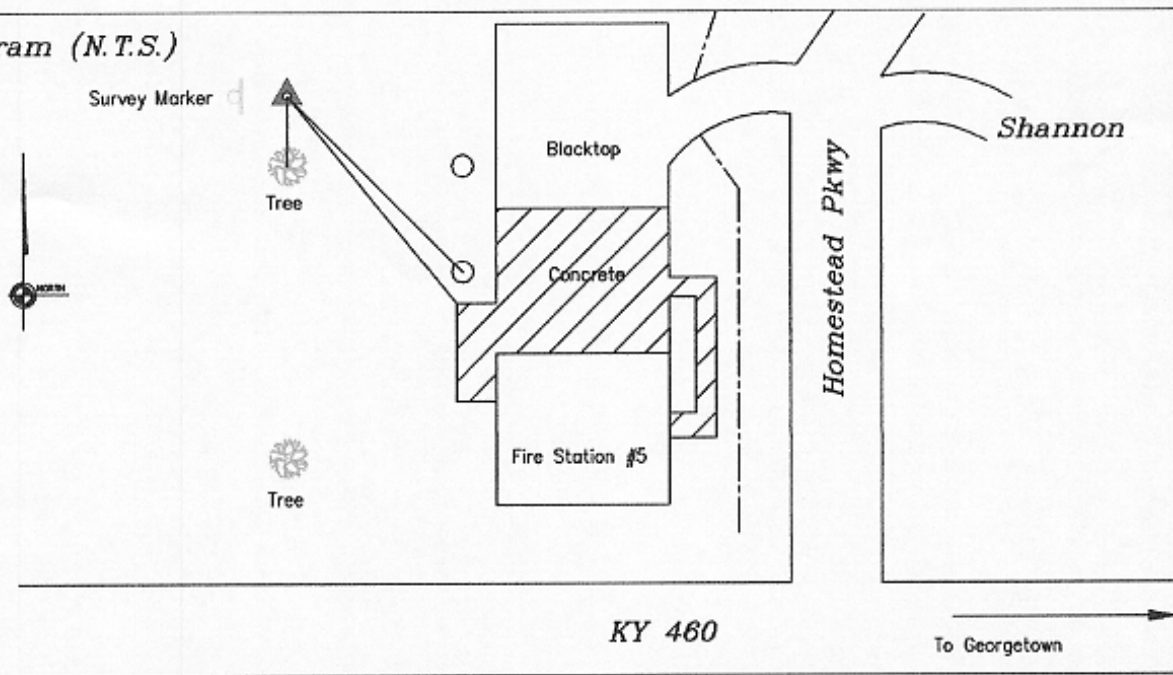
# SCOTT COUNTY, KENTUCKY CONTROL MONUMENT RECORD

<i>Station Designation</i> <u>SC9701</u>	<i>Station Type</i> <u>Aluminum Disc</u>	<i>USGS Quad</i> <u>Georgetown, KY</u>	<i>Date Set or Found</i> <u>September, 1997</u>
<i>County, State</i> <u>Scott, Kentucky</u>	<i>State Plane Zone</i> <u>KY North 1601</u>	<i>Horizontal Datum</i> <u>NAD83</u>	<i>Vertical Datum</i> <u>NAVD88</u>
<i>Latitude</i> <u>N 38° 12' 26.26415"</u>	<i>Northing</i> <u>78592.139</u> (meters)	<i>Easting</i> <u>463014.321</u> (meters)	<i>Elevation</i> <u>257.589</u> (meters)
<i>Longitude</i> <u>W 84° 40' 20.27330"</u>	<i>Northing</i> <u>257847.71</u> (US Survey Feet)	<i>Easting</i> <u>159072.82</u> (US Survey Feet)	<i>Elevation</i> <u>845.11</u> (US Survey Feet)
<i>Convergence</i> <u>-0° 15' 45.7137"</u>	<i>Scale Factor</i> <u>0.999972317189</u>	<i>Elevation Factor</i> <u>0.999964930</u>	<i>Combined Factor</i> <u>0.99993725</u>

### Station Description

Monument is located behind the Scott County Fire Station # 5 off of Homestead Parkway. It is described as being 89.0 feet Northwest of the corner of the sidewalk, 72.3 feet Northwest of the center of a lightpole, and 39.8 feet North of the center of a tree.

### Recovery Diagram (N.T.S.)



**GEORGETOWN, SCOTT CO. PLANNING COMMISSION**

230 EAST MAIN ST.

GEORGETOWN, KENTUCKY 40324

PH: (502) 867-3701 FAX: (502) 867-3725

**MapSync**

2628 Wilhite Court  
Building 4 Suite 102

Lexington, Kentucky 40503

Phone (859) 278-6277 Fax (859) 278-8645