

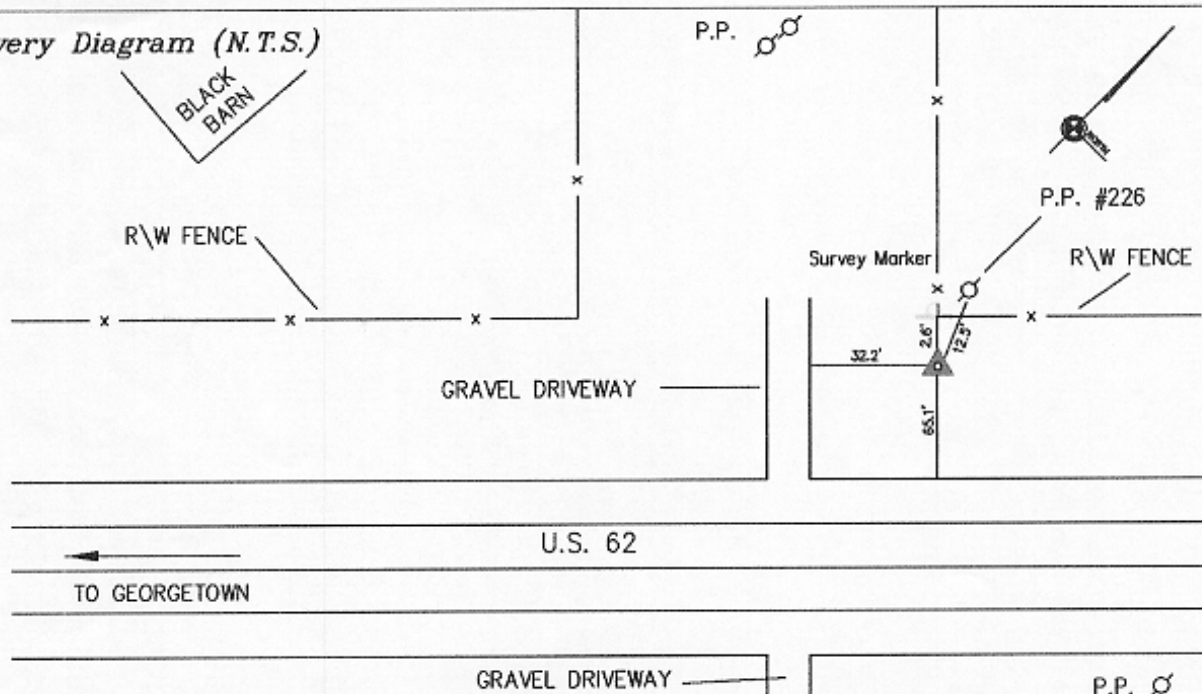
SCOTT COUNTY, KENTUCKY CONTROL MONUMENT RECORD

Station Designation SC9418	Station Type Aluminum Disc	USGS Quad Georgetown, KY	Date Set or Found June, 1994
County, State Scott, Kentucky	State Plane Zone KY North 1601	Horizontal Datum NAD83	Vertical Datum NAVD88
Latitude N 38° 14' 38.01074"	Northing 82606.386 (meters)	Easting 475593.657 (meters)	Elevation 270.263 (meters)
Longitude W 84° 31' 43.71096"	Northing 271017.78 (US Survey Feet)	Easting 1560343.52 (US Survey Feet)	Elevation 886.69 (US Survey Feet)
Convergence -0° 10' 24.4"	Scale Factor 0.999969639	Elevation Factor 0.999962970	Combined Factor 0.99993261

Station Description

Station is located along the North side of U.S. 62, 1.1 miles East of U.S. 62 and I-75 interchange. The station is located near a Right-of-Way fence corner, 2.6 feet Northeast from the corner post, 12.5 feet Northeast of the center of power pole #226, 65.1 feet North of the Northern edge of U.S. 62, and approximately 32.0 feet East of the edge of a gravel driveway

Recovery Diagram (N.T.S.)



GEORGETOWN, SCOTT CO. PLANNING COMMISSION
 230 EAST MAIN ST.
 GEORGETOWN, KENTUCKY 40324
 PH: (502) 867-3701 FAX: (502) 867-3725

MapSync
 2628 Wilhite Court
 Building 4 Suite 102
 Lexington, Kentucky 40503
 Phone (859) 278-6277 Fax (859) 278-8645