

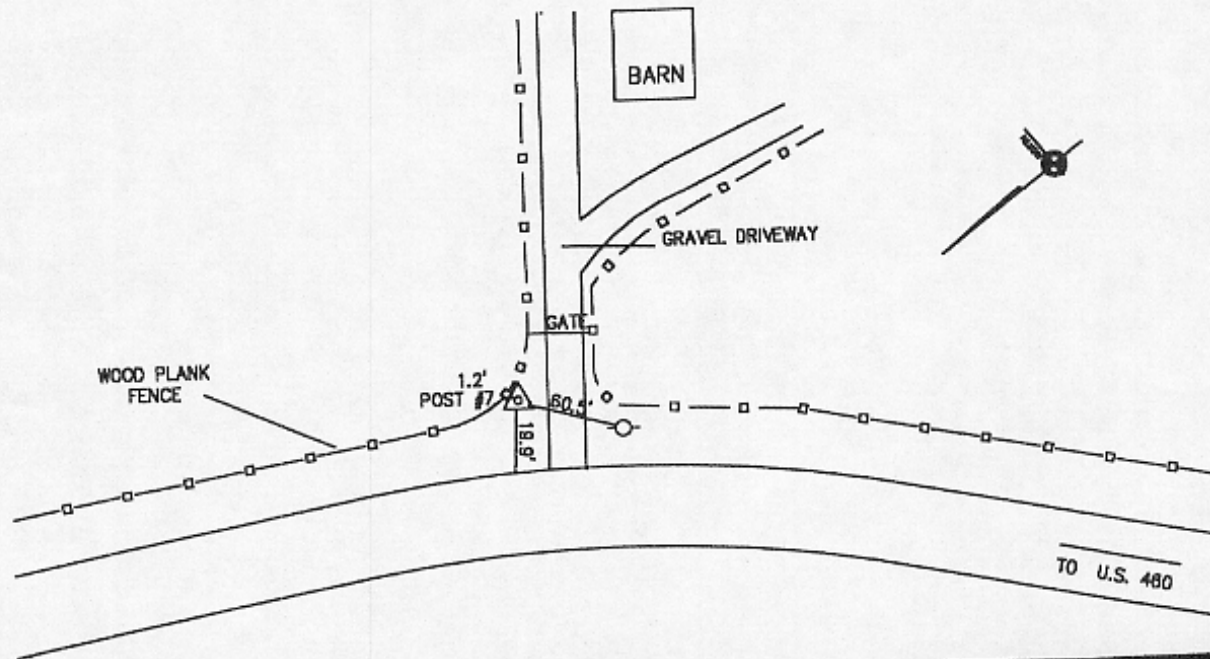
SCOTT COUNTY, KENTUCKY CONTROL MONUMENT RECORD

Station Designation SC9412	Station Type Aluminum Disc	USGS Quad Georgetown, KY	Date Set or Found June 1994
County, State Scott, Kentucky	State Plane Zone KY North 1601	Horizontal Datum NAD83	Vertical Datum NAVD88
Latitude N 38° 13' 24.47430"	Northing 80364.929 (meters)	Easting 468170.992 (meters)	Elevation 259.758 (meters)
Longitude W 84° 36' 48.60153"	Northing 263663.94 (US Survey Feet)	Easting 1535991.00 (US Survey Feet)	Elevation 852.22 (US Survey Feet)
Convergence -0° 13' 34.0392"	Scale Factor 0.999971083898	Elevation Factor	Combined Factor

Station Description

Station is located on North side of KY 227, 1.0 miles from the intersection of KY 227 and US 460 at Great Crossing. Station is 1.2' from wood fence (Post #7), 19.9' North of edge of KY 227, and 60.5' West of power pole.

Recovery Diagram (N.T.S.)



GEORGETOWN, SCOTT CO. PLANNING COMMISSION

101 EAST MAIN ST.

GEORGETOWN, KENTUCKY 40324

PH: (502) 867-3701 FAX: (502) 863-7852

MapSync

2670 Wilhite Drive Suite 4
Lexington, Kentucky 40503
Phone (606)278-8277 Fax (606)278-8845