

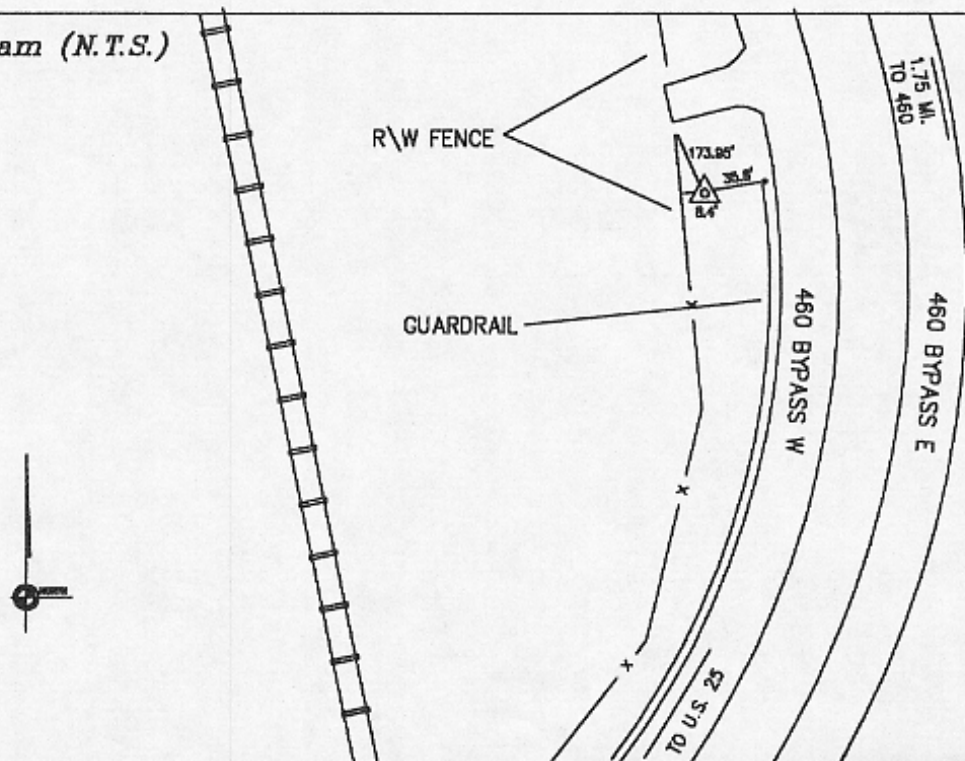
SCOTT COUNTY, KENTUCKY CONTROL MONUMENT RECORD

Station Designation SC9409	Station Type Aluminum Disc	USGS Quad Georgetown, KY	Date Set or Found June 1994
County, State Scott, Kentucky	State Plane Zone KY North 1601	Horizontal Datum NAD83	Vertical Datum NAVD88
Latitude N 38° 11' 29.35393"	Northing 76793.359 (meters)	Easting 474373.137 (meters)	Elevation 275.255 (meters)
Longitude W 84° 32' 33.14525"	Northing 251946.21 (US Survey Feet)	Easting 1556339.20 (US Survey Feet)	Elevation 903.06 (US Survey Feet)
Convergence -0° 10' 55.1278"	Scale Factor 0.999973599342	Elevation Factor	Combined Factor

Station Description

Located along R\W fence of 460 Bypass West-Bound lanes 1.7 miles West from Route 460-Bypass and 460 intersection, 1.2 miles East from US 25 Bypass and 460 intersection. Station is located 8.4' from R\W fence, 35.8' from first post at beginning of guardrail, 173.95' from first post at end of R\W fence.

Recovery Diagram (N.T.S.)



GEORGETOWN, SCOTT CO. PLANNING COMMISSION
101 EAST MAIN ST.

GEORGETOWN, KENTUCKY 40324

PH: (502) 867-3701 FAX: (502) 863-7852

MapSync

2670 Wilhite Drive Suite 4
Lexington, Kentucky 40503
Phone (606)278-6277 Fax (606)278-6845