

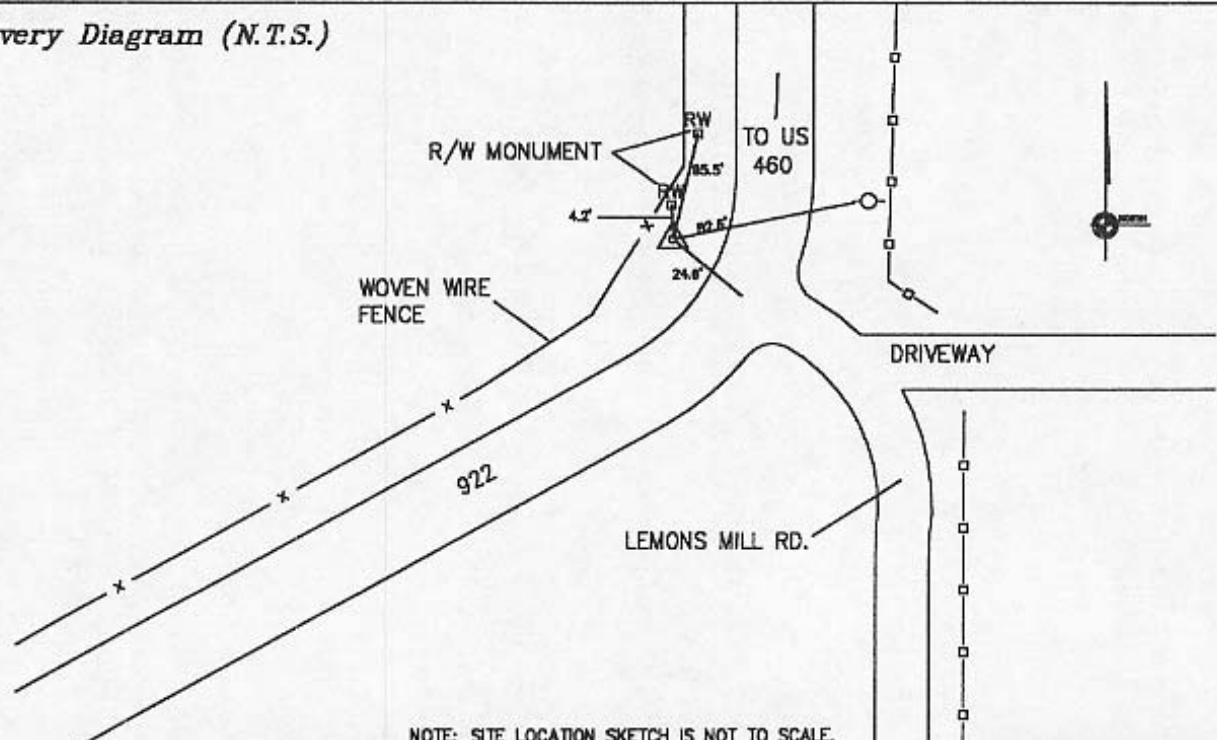
SCOTT COUNTY, KENTUCKY CONTROL MONUMENT RECORD

Station Designation SC9402	Station Type Aluminum Disc	USGS Quad Georgetown, KY	Date Set or Found June 1994
County, State Scott, Kentucky	State Plane Zone KY North 1601	Horizontal Datum NAD83	Vertical Datum NAVD88
Latitude N38° 11' 11.31214"	Northing 76222.893 (meters)	Easting 479317.812 (meters)	Elevation 270.573 (meters)
Longitude W84° 29' 09.88295"	Northing 250074.61 (US Survey Feet)	Easting 1572561.85 (US Survey Feet)	Elevation 887.71 (US Survey Feet)
Convergence -0° 08' 48.6846"	Scale Factor 0.999974021579	Elevation Factor	Combined Factor

Station Description

Monument is located along west side of route 922, 2.5 miles south of intersection of Route 922 and U.S. 460 across from Lemons Mill Rd. Station is 24.6' from CL of Route 922, 4.2' from R/W monument, 95.5' from R/W monument, and 82.6' from power pole across Route 922.

Recovery Diagram (N.T.S.)



NOTE: SITE LOCATION SKETCH IS NOT TO SCALE.

CITY OF GEORGETOWN, KENTUCKY
 100 COURT ST., P.O. BOX 677
 GEORGETOWN, KENTUCKY 40324
 (502) 863-9803

MapSync

2670 Wilhite Drive Suite 4
 Lexington, Kentucky 40503
 Phone (606)278-6277 Fax (606)278-8845