

GEORGETOWN, KY CONTROL MONUMENT RECORD

DESIGNATION: K144

TYPE: BRONZE DISK IN CONCRETE STAMPED "K 144 1949"

DATE SET: NOVEMBER 1949

QUAD: GEORGETOWN, KY

HORIZONTAL DATUM: NAD 83

VERTICAL DATUM: 1929

STATE: KENTUCKY

COUNTY: SCOTT

ZONE: KENTUCKY N 1601

NORTHING

EASTING

ELEVATION

73762.9848 mtr.

474510.3232 mtr.

264.209 mtr. BM

242004.059 ft.

1556789.285 ft.

866.826 ft. BM

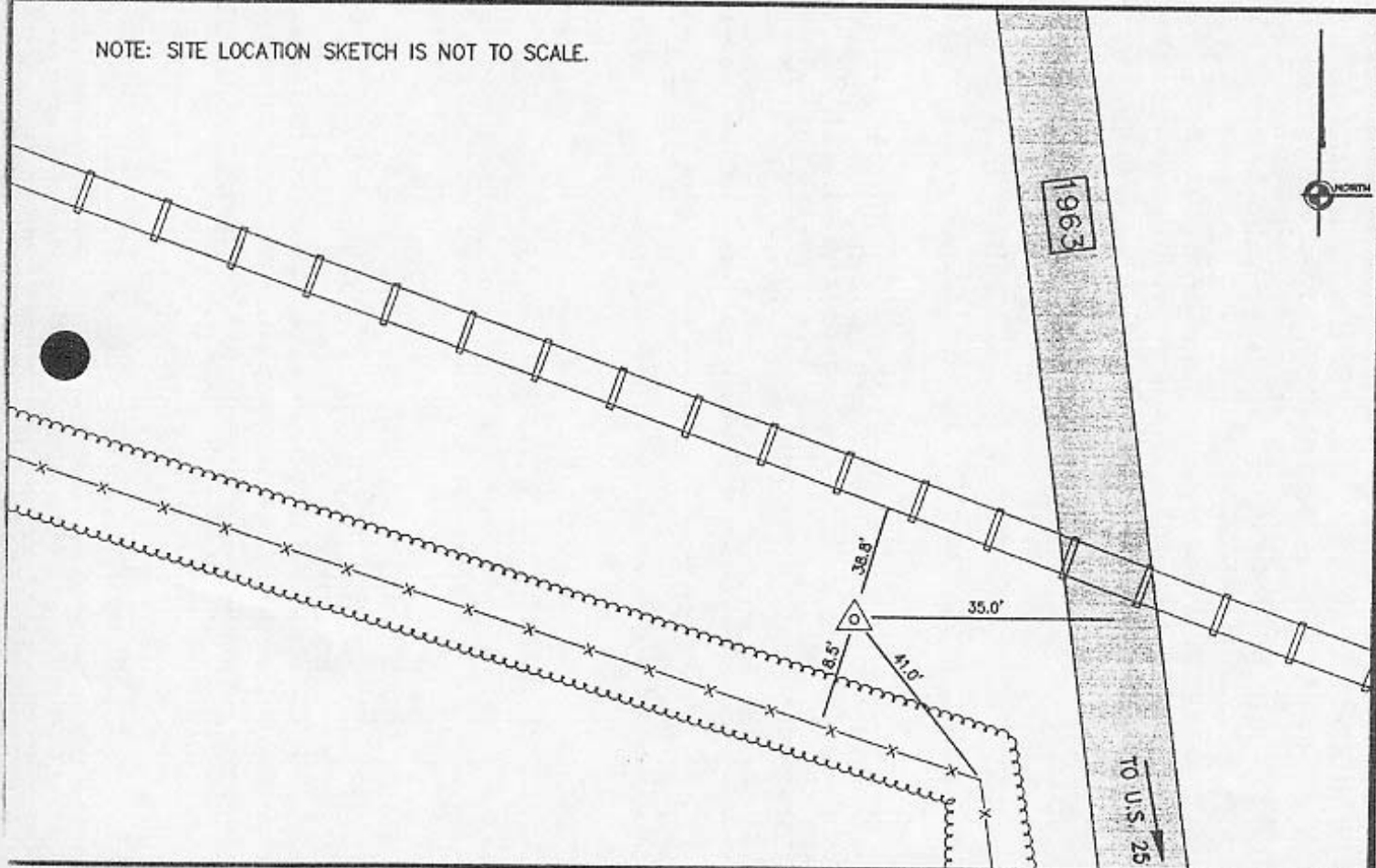
LATITUDE: 38° 09' 51.083485" N

LONGITUDE: 84° 32' 27.114292" W

SCALE: 0.999975991058

CONVERGENCE: -0° 10' 51.3755"

NOTE: SITE LOCATION SKETCH IS NOT TO SCALE.



STATION IS LOCATED 1.05 MILES NORTH ALONG SOUTHERN RAILWAY FROM THE STATION AT DONERAIL, 0.4 MILES SOUTH OF A CONCRETE BRIDGE OVER THE CANE RIVER, AT A BLACKTOP ROAD CROSSING OF STATE ROUTE 1973. STATION IS 8.5' NORTH EAST OF A FENCE LINE, 38.8' SOUTH WEST OF THE SOUTH WEST RAIL OF THE RR TRACK, 41' NORTH WEST OF FENCE CORNER, 35' WEST OF CENTERLINE OF ROUTE 1973. RECOVERED IN 1958 AS DESCRIBED AND STAMPED "866.826". RECOVERED AS DESCRIBED IN 1960.

CITY OF GEORGETOWN, KENTUCKY

100 COURT ST., P.O. BOX 677
 GEORGETOWN, KENTUCKY 40324
 (502) 863-9803

CDP
 ENGINEERS, INC.

CARTER DIXON POINDEXTER

816 WELLINGTON WAY, SUITE C, LEXINGTON, KENTUCKY 40503
 PHONE: (800) 223-8000 FAX: (800) 223-8823