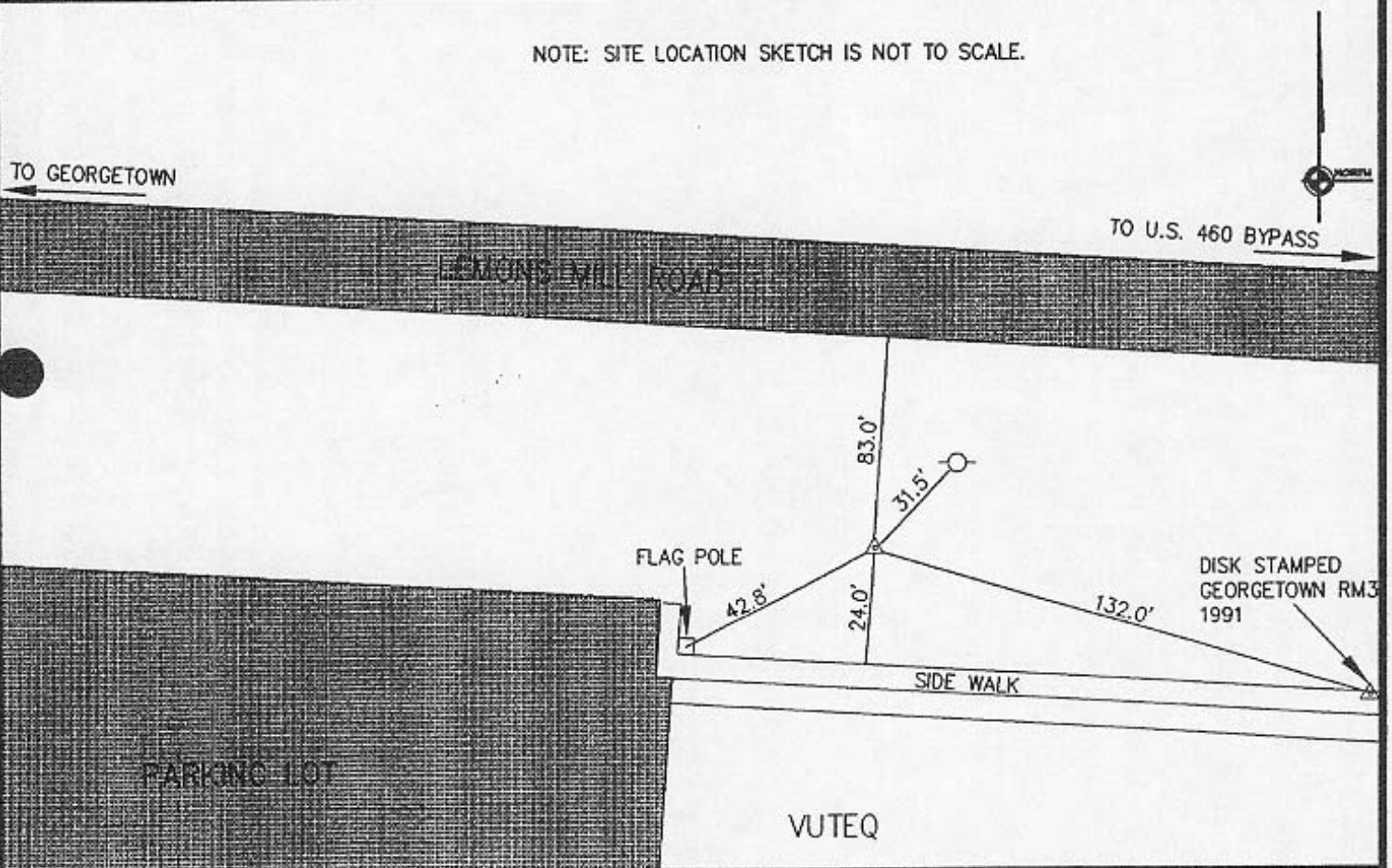


GEORGETOWN, KY CONTROL MONUMENT RECORD

DESIGNATION: GT1935
 TYPE: BRONZE DISK SET IN CONCRETE STAMPED "GEORGETOWN 1935 1982"
 DATE SET: 1935 QUAD: 1929
 HORIZONTAL DATUM: NAD 83 VERTICAL DATUM: 1929
 STATE: KENTUCKY COUNTY: SCOTT ZONE: KENTUCKY N 1601

NORTHING		EASTING		ELEVATION	
77640.8250	mtr.	474424.9140	mtr.	283.114	mtr. GPS
254726.607	ft.	1556509.072	ft.	928.9	ft. GPS
LATITUDE: 38° 11' 56.845190 N			LONGITUDE: 84° 32' 31.127866" W		
SCALE: 0.999972970523			CONVERGENCE: -0° 10' 53.8722"		

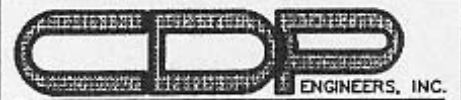
NOTE: SITE LOCATION SKETCH IS NOT TO SCALE.



STATION IS EXISTING U.S.G.S. FIRST ORDER CONTROL POINT. MONUMENT IS LOCATED ON THE SOUTH SIDE OF LEMONS MILL ROAD, 24' NORTH OF SIDEWALK, 42.8' NORTH EAST OF FLAG POLE, 31.5' SOUTH WEST OF POWER PLOE, 83' SOUTH OF LEMONS MILL ROAD, AND 132' NORTH WEST OF MONUMENT STAMPED GEORGETOWN RM3 1991 (LOCATED AT THE FRONT EDGE /END OF SIDEWALK).

CITY OF GEORGETOWN, KENTUCKY

100 COURT ST., P.O. BOX 677
 GEORGETOWN, KENTUCKY 40324
 (502) 863-9803



616 WELLINGTON WAY, SUITE C, LEXINGTON, KENTUCKY 40503
 PHONE: (806) 223-8080 FAX: (806) 223-8823